



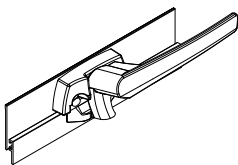
Aria Wedgeless Window Handle

Fixing Instructions

1

Positioning fastener

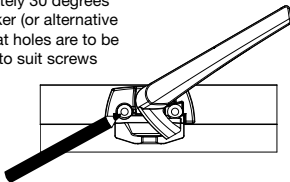
Position Aria Wedgeless fastener at desired location making sure that tongue has full engagement with the window frame, as well as having enough clearance between the fastener base and the window frame. This will prevent the base from clipping on the frame when being opened.



2

Mark position

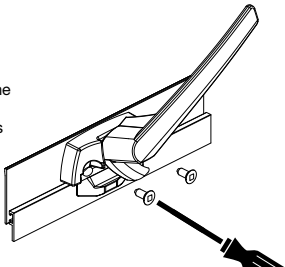
Turn handle approximately 30 degrees and using a black marker (or alternative tool) mark positions that holes are to be drilled. Now drill holes to suit screws using a 3.5mm drill bit.



3

Attach fastener

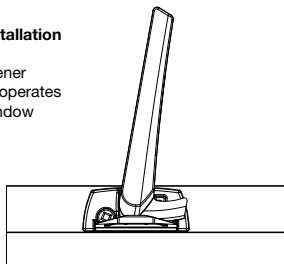
Using a square drive screwdriver attach the fastener to the sash using the two screws supplied.



4

Completing installation

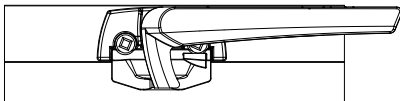
Check that fastener opens fully and operates freely on the window



5

Checking operation

Check that the fastener closes fully and secures the window shut



10 YEAR WARRANTY

The warranty covers manufacturing defects, standard finishes but excludes plated finishes or finishes exposed to a corrosive environment. The warranty excludes damage caused by installation contrary to written instructions and incidental or consequential damage. We recommend regular cleaning with mild detergent.